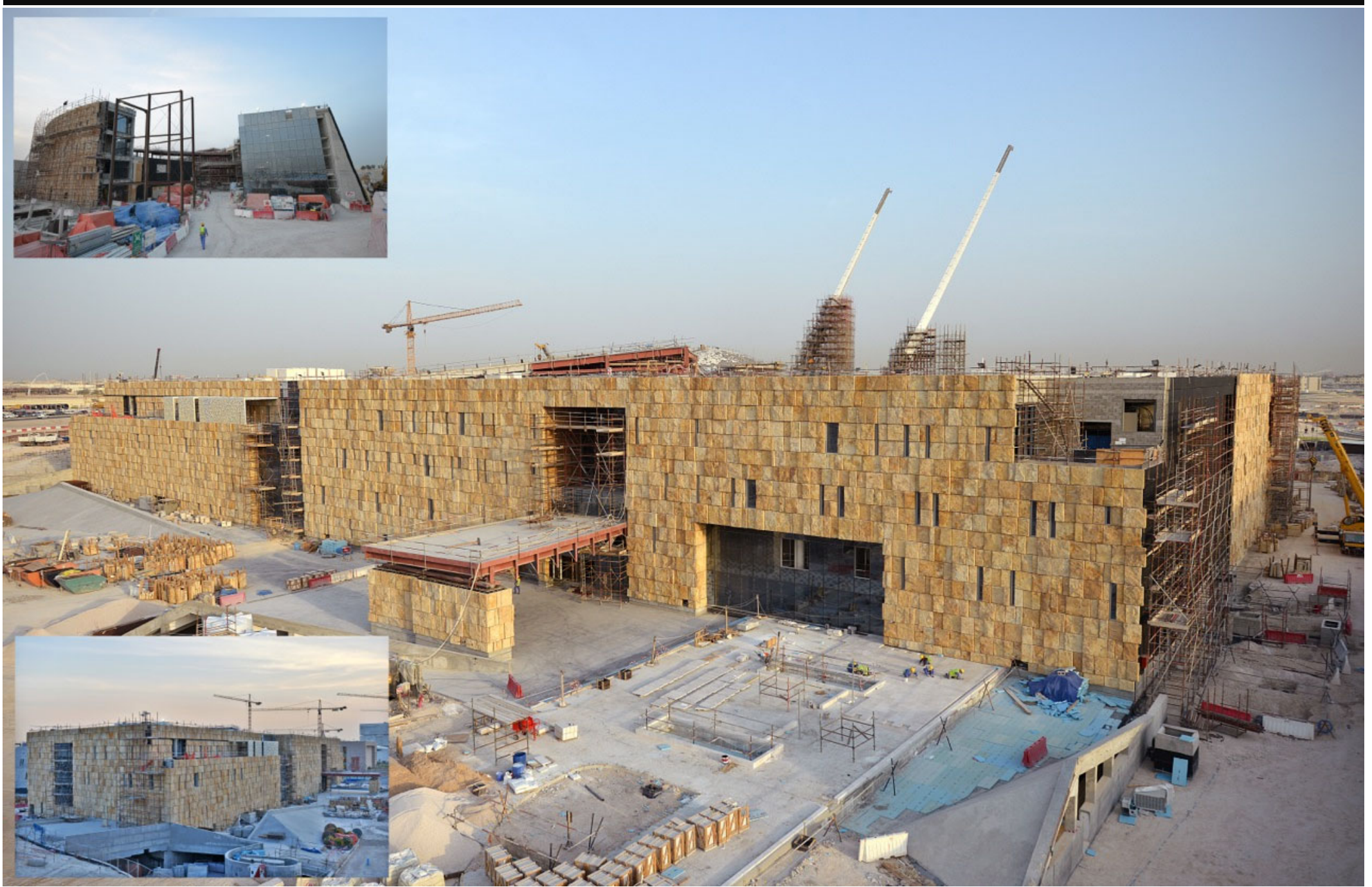




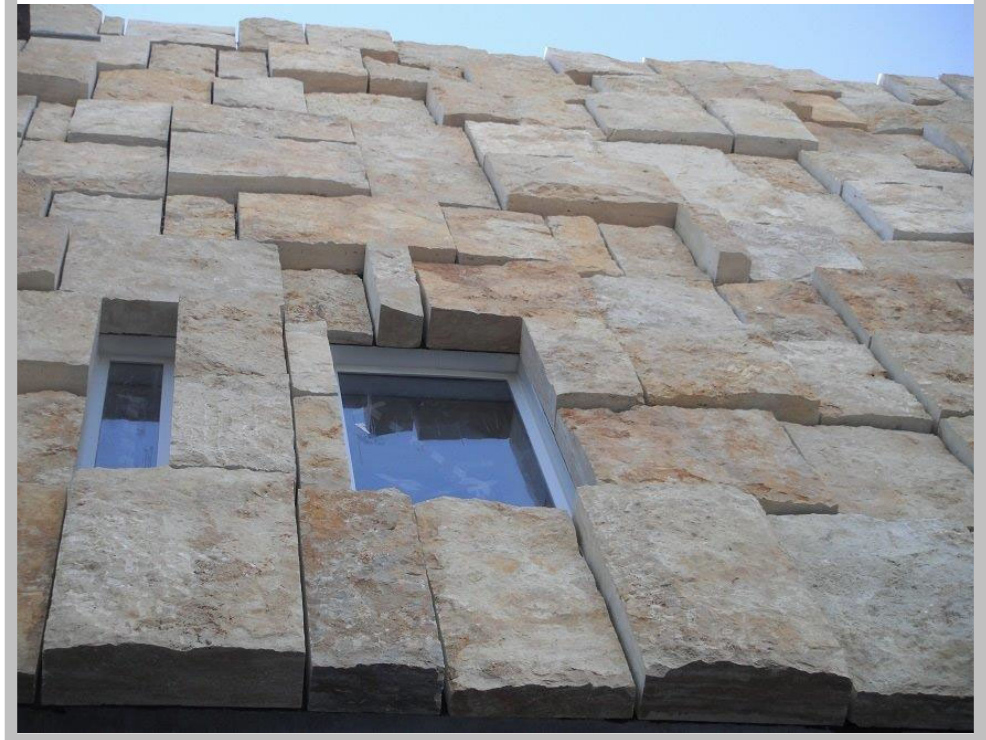
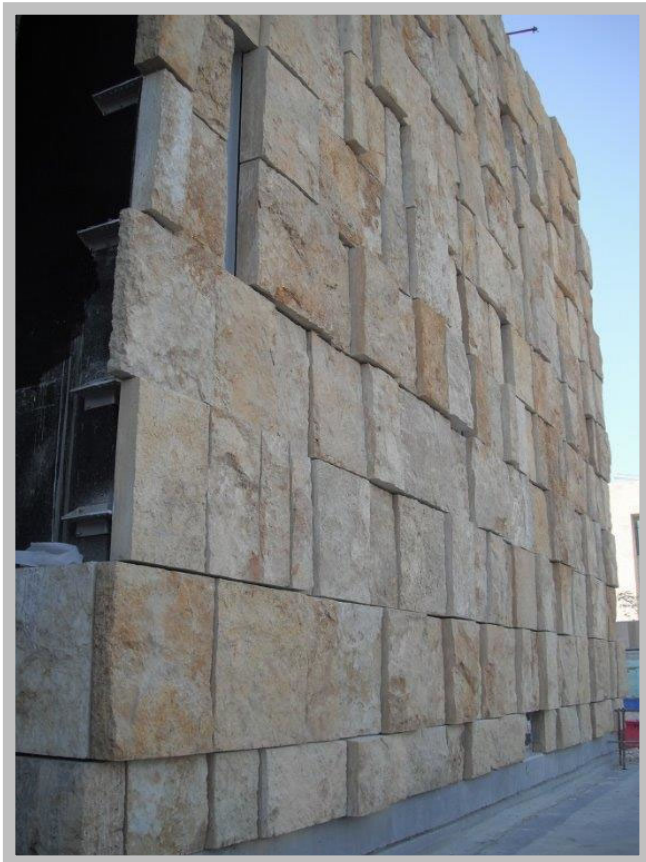
Case Study – Adnoc New Headquarters

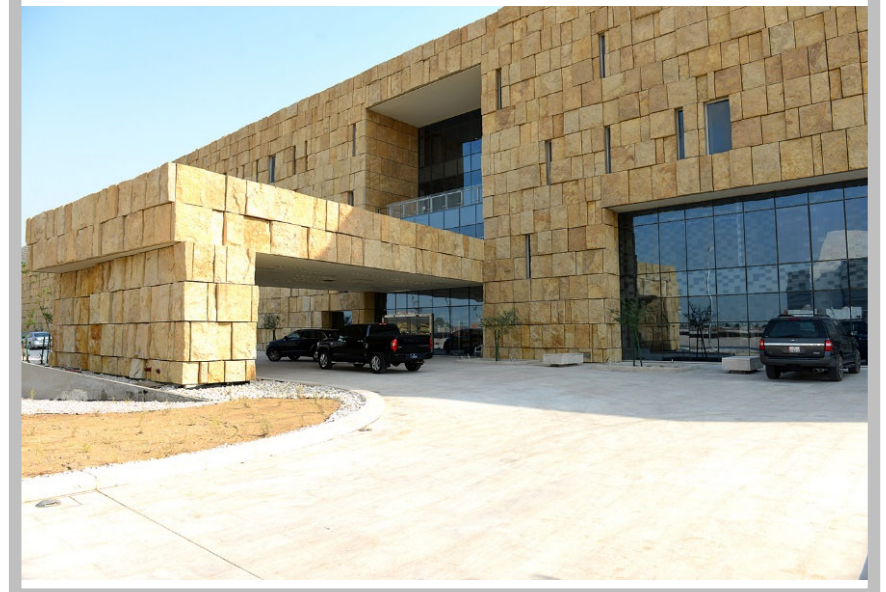
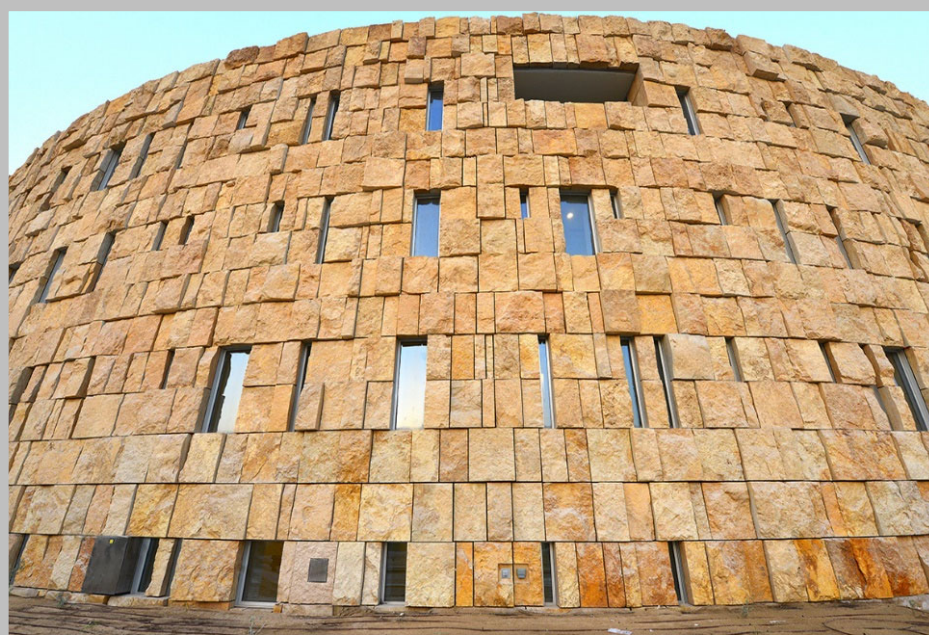




Case Study – CMC College

Project: CMC College
Location: Doha, Qatar
Contactor: Renaissance Construction
Architect: Burns & Mc Donnell
Consultant: Astad
Area of Installation: 8.500 split faced travertine







Case Study – CMC College

Project Unique Constraints

- Massive travertine blocks in various sizes
- Production & fixing the blocks was a challenge

Production of massive blocks



Fixing of massive blocks

